

**Banding**

**Pole Band Kit**

**3/4" Pole Band Kit**



PART#	DESCRIPTION	PKG QTY	CTN QTY	CTN WT.
2450	3/4" BANDING CLAMP KIT WITH 36" BAND AND MOUNTING PLATE	1	1	0
2451	3/4" BANDING CLAMP KIT WITH 48" BAND AND MOUNTING PLATE	1	1	0
2452	3/4" BANDING CLAMP KIT WITH 60" BAND AND MOUNTING PLATE	1	1	0
2453	3/4" BANDING CLAMP KIT WITH 72" BAND AND MOUNTING PLATE	1	1	0
2454	3/4" BANDING CLAMP KIT WITH 80" BAND AND MOUNTING PLATE	1	1	0

**1-1/4" Pole Band Kit**



PART#	DESCRIPTION	PKG QTY	CTN QTY	CTN WT.
2440	1-1/4" BANDING CLAMP KIT WITH 36" BAND AND MOUNTING PLATE	1	1	0
2441	1-1/4" BANDING CLAMP KIT WITH 48" BAND AND MOUNTING PLATE	1	1	0
2442	1-1/4" BANDING CLAMP KIT WITH 60" BAND AND MOUNTING PLATE	0	0	0
2443	1-1/4" BANDING CLAMP KIT WITH 72" BAND AND MOUNTING PLATE	1	1	0
2444	1-1/4" BANDING CLAMP KIT WITH 80" BAND AND MOUNTING PLATE	1	1	0

**Stainless Steel Band**

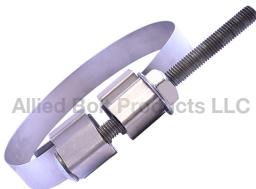
**TYPE 201 STAINLESS STEEL BAND**



PART#	DESCRIPTION	PKG QTY	CTN QTY	CTN WT.
2415	.020" X 1/4" TYPE 201 STAINLESS STEEL BAND	1	1	2
2416	.025" X 3/8" TYPE 201 STAINLESS STEEL BAND	1	1	4
2417	.030" X 1/2" TYPE 201 STAINLESS STEEL BAND	1	1	6
2418	.030" X 5/8" TYPE 201 STAINLESS STEEL BAND	1	1	7
2419	.030" X 3/4" TYPE 201 STAINLESS STEEL BAND	1	1	8

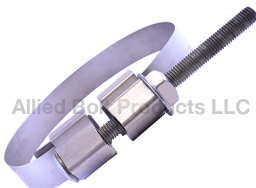
**Banding Clamp Assembly**

**3/4" BANDING CLAMP ASSEMBLY**



PART#	DESCRIPTION	PKG QTY	CTN QTY	CTN WT.
2403	3/4" BANDING CLAMP ASSEMBLY	50	1	25
2403-24	3/4" BANDING CLAMP ASSEMBLY WITH 24" BAND	1	1	1
2403-36	3/4" BANDING CLAMP ASSEMBLY WITH 36" BAND	1	1	1
2403-40	3/4" BANDING CLAMP ASSEMBLY WITH 40" BAND	1	1	1
2403-48	3/4" BANDING CLAMP ASSEMBLY WITH 48" BAND	1	1	1
2403-60	3/4" BANDING CLAMP ASSEMBLY WITH 60" BAND	1	1	1
2403-72	3/4" BANDING CLAMP ASSEMBLY WITH 72" BAND	1	50	50
2403-80	3/4" BANDING CLAMP ASSEMBLY WITH 80" BAND	1	1	1
2403-90	3/4" BANDING CLAMP ASSEMBLY WITH 90" BAND	1	1	2

**1-1/4" BANDING CLAMP ASSEMBLY**



PART#	DESCRIPTION	PKG QTY	CTN QTY	CTN WT.
2404	1-1/4" BANDING CLAMP ASSEMBLY	25	1	32
2404-36	1-1/4" BANDING CLAMP ASSEMBLY WITH 36" BAND	1	1	2
2404-40	1-1/4" BANDING CLAMP ASSEMBLY WITH 40" BAND	1	1	2
2404-48	1-1/4" BANDING CLAMP ASSEMBLY WITH 48" BAND	1	1	2
2404-60	1-1/4" BANDING CLAMP ASSEMBLY WITH 60" BAND	1	1	2
2404-72	1-1/4" BANDING CLAMP ASSEMBLY WITH 72" BAND	1	1	2
2404-80	1-1/4" BANDING CLAMP ASSEMBLY WITH 80" BAND	1	1	2



**Giant Band**

**.044" GIANT BAND 201 STAINLESS**

PART#	DESCRIPTION	PKG QTY	CTN QTY	CTN WT.
2407	.044" X 3/4" GIANT BAND 201 STAINLESS	1	1	12
2408	.044" X 1" GIANT BAND 201 STAINLESS	1	1	16
2409	.044" X 1-1/4" GIANT BAND 201 STAINLESS	1	1	20

**Buckles**

**Stainless Steel Buckle**

**STAINLESS STEEL BUCKLE TYPE 201**



PART#	DESCRIPTION	PKG QTY	CTN QTY	CTN WT.
2425	1/4" STAINLESS STEEL BUCKLE TYPE 201	100	1	3
2426	3/8" STAINLESS STEEL BUCKLE TYPE 201	100	1	1
2427	1/2" STAINLESS STEEL BUCKLE TYPE 201	100	8	17
2428	5/8" STAINLESS STEEL BUCKLE TYPE 201	100	1	2
2429	3/4" STAINLESS STEEL BUCKLE TYPE 201	100	4	16

**Giant Buckle**

**GIANT BUCKLE**



PART#	DESCRIPTION	PKG QTY	CTN QTY	CTN WT.
2410	3/4" GIANT BUCKLE	25	4	8
2411	1" GIANT BUCKLE	25	4	10
2412	1-1/4" GIANT BUCKLE	25	4	32

**Banding Brackets**

**BANDING MOUNTING BRACKET**

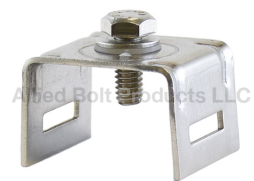
**BANDING MOUNTING BRACKET**



PART#	DESCRIPTION	PKG QTY	CTN QTY	CTN WT.
860	BANDING MOUNTING BRACKET	4	1	31

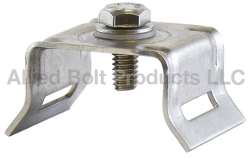
**One Bolt Straight Leg Bracket**

**ONE BOLT STRAIGHT LEG BRACKET**



PART#	DESCRIPTION	PKG QTY	CTN QTY	CTN WT.
2413	ONE BOLT STRAIGHT LEG BRACKET	50	1	37

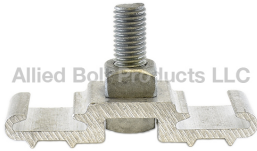
One Bolt Flared Leg Bracket



PART#	DESCRIPTION	PKG QTY	CTN QTY	CTN WT.
2414	ONE BOLT FLARED LEG BRACKET	50	1	8

Aluminum Mounting Plate

1-1/2" ALUM. MOUNTING PLATE WITH BOLT



PART#	DESCRIPTION	PKG QTY	CTN QTY	CTN WT.
2400	1-1/2" X 4-3/4" ALUM. MOUNTING PLATE WITH 5/8-11 X 2" BOLT	25	1	15
2401	1-1/2" X 5-1/4" ALUM. MOUNTING PLATE WITH 5/8-11 X 2" BOLT	25	1	22
2402	1-1/2" X 5-1/4" ALUM. MOUNTING PLATE WITH 5/8-11 X 3" BOLT	25	1	25

Banding Tool



Banding Tool

PART#	DESCRIPTION	PKG QTY	CTN QTY	CTN WT.
2405	STANDARD BAND TOOL	1	1	5
2406	GIANT BAND TOOL	1	1	11